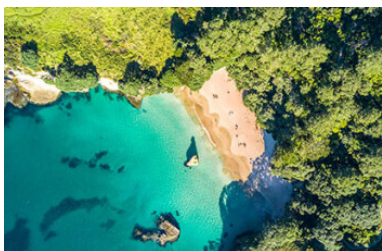




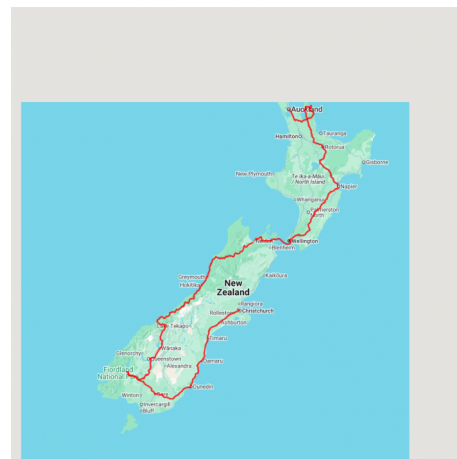
## New Zealand Grand Tour

Experience the essential must see destinations of New Zealand. Beginning the journey in Tāmaki / Auckland, the City of Sails and then on to the golden sand beaches of the Coromandel. Explore the culture of Rotorua, the wine region of the Hawkes Bay and the "coolest little capital" - Wellington. Crossing the beauty of the Cook Strait through the Marlborough Sounds to arrive in the South Island, complete with rugged mountains, glaciers and lakes. A true classic driving tour indulging in the highlights!



Starts in: Auckland  
Finishes in: Christchurch  
Length: 14days / 13nights  
Accommodation: Motels  
Can be customised: Yes

This itinerary can be customised to suit you perfectly. We can add more days, remove days, change accommodations, mix it up, add activities to suit your interests or simply design and create something from scratch. Call us today to get your custom New Zealand itinerary underway.



### Inclusions:

- Includes: Late model rental cars
- Includes: Fully inclusive rental car insurance (excess may apply)
- Includes: Unlimited kms
- Includes: Afterhours emergency support while touring
- Included activity: The Visitor Promise - Cultural Learning Course
- Included activity: Private Transfer Auckland Airport to your Auckland Accommodation with Tourcorp
- Included activity: Electronic Travel Guide and In-Country Support App
- Included activity: Interislander Ferry Wellington to Picton



## Day 1



### Welcome to Auckland

Welcome to Auckland, known in Māori as Tāmaki Makaurau. Auckland is New Zealand's vibrant "City of Sails," and the country's largest metropolitan area. Nestled between the Pacific Ocean and the Tasman Sea. Surrounded by native bush, lush rainforests, and pristine beaches, Auckland is a haven for both adventurers and urban explorers. Wander through world-class museums and galleries in the city centre or enjoy a peaceful retreat at the Auckland Gardens, where stunning landscapes showcase New Zealand's diverse flora. Stroll along the lively waterfront to savour fresh seafood and international cuisine at Viaduct restaurants. For an unforgettable perspective, ascend the iconic SkyTower, New Zealand's tallest structure, and take in panoramic views of the city and its picturesque islands.

---

### Private Transfer Auckland Airport to your Auckland Accommodation with Tourcorp

You will be met at the Auckland airport by the driver and transferred to your Auckland accommodation.

---

### Your accommodation: Oaks Auckland Hotel

Oaks Auckland Hotel offers a comfortable self-contained apartment in downtown Auckland. Located a short walk from Britomart Transport and the Viaduct. Enjoy your stay in central Auckland surrounded by delicious eateries or use your in-house kitchenette to dine in!



---

## Day 2



### Collect Rental Car

This tour's price includes an intermediate-sized vehicle, setting you up for comfortable travels. Yet, we understand every adventure is unique! Feel free to select the perfect wheels from our incredible collection of rental cars, spanning from economy hatchbacks to premium SUVs.

---

### Auckland to Whitianga via Coromandel Township

As you leave the Auckland boundary the landscape changes to lush farmland. You'll cross the fertile Hauraki Plains - one of New Zealand's largest dairy producing regions. Pass the Thames Estuary, a haven for wildlife and shore birds. Take a short detour to nearby Miranda (well sign posted) to see the large flocks of godwits and oystercatchers. Arriving into the old gold mining town of Thames, there are two different routes to the east coast of the Coromandel. Directly over the Coromandel Ranges will deliver you to the coast in a snappy 45 minutes or if you're after more leisurely route, head North to the Coromandel Township along the Pōhutukawa Coast (part of the Pacific Coast Highway). This is one of the most spectacular drives in the region and not to be missed. Continue down the coast to arrive in the picturesque town of Whitianga.

---

### Your accommodation: Beachside Resort

Beachside Resort is located just a three minute stroll to Whitianga's main street and only a minute to the beautiful Buffalo Beach. The modern fully equipped apartments are the perfect base for exploring the region.



## Day 3



### Whitianga to Rotorua

Heading south from the Coromandel Peninsula passing through a popular local holiday spot, Tairua continuing on to State Highway 2 passing through a series of quaint farming villages before arriving in Te Aroha. Te Aroha centre is complete with Edwardian style buildings and the popular natural mineral spas. Pop behind the spa building and with a little patience you will see the world's only natural hot soda water geyser, Mokena Geyser, erupt. From here it is a short drive to Matamata, home to Hobbiton and then on to the geothermal and cultural centre, Rotorua.

### Rotorua

Discover the geothermal, adventure, and cultural wonderland of Rotorua. As you explore, you may see steam rising from cracks in the road, bubbling and hissing water in pools along the lake's edge, and the unmistakable smell of Sulfur. Rotorua is rich in Māori culture and history, with many Māori inhabitants recognising the great potential of the volcanic land. For an outdoor adventure, head to The Redwoods and experience the rainforest treetops from high up. There are a few accessible trails for disabled hikers and great biking trails as well. If you're lucky, you might spot some of New Zealand's native birds, such as the Pīwakawaka (Fantail) and the Tūī. Alternatively, enjoy the Lake Tikitapu Blue Lake Walk or explore Kuirau Park, where you'll find bubbling mud pools and steaming lakes. Don't miss the private thermal reserves such as Te Puia and Wai-O-Tapu, where you can walk among bubbling mud pools, spouting geysers, and Sulfur ponds. Just a few minutes from the town centre, the Agrodome and National Kiwi Hatchery offer an insight into nature. Rotorua's rich Māori culture is a must-see. Spend an evening with Te Pā Tū, complete with a traditional-style dinner or stroll along the lake edge to reach one of the country's oldest Māori villages at Ohinemutu. When hunger strikes, visit Eat Street in Rotorua CBD, a vibrant street lined with delicious eateries and restaurants to satisfy any craving. No visit to Rotorua would be complete without experiencing Rotorua's original tourist attraction - a relaxing spa treatment. This town boasts an array of wellness experiences to unwind in. Whether you are seeking adventure, culture, or relaxation, Rotorua offers an unforgettable experience.

### SUGGESTED ACTIVITY - Te Pā Tū Evening Māori Cultural Experience - Dinner Included

New Zealand's Most Awarded Cultural Attraction, presenting Te Pā Tū. Feast on song, drama, tradition, and divine seasonal kai (cuisine) within the forest Pā (village) blanketed by towering Tawa trees, blazing bonfires, and a forest-formed amphitheatre. Te Pā Tū shares Māori history, traditions, and cultural aspirations across 4-hours of celebration and feasting. These events change with each season of the Maramataka, the Māori lunar calendar.

### Your accommodation: Silver Fern Suites & Spa

Silver Fern Suites & Spa is located just minutes from Rotorua's city centre and is close to popular thermal attractions, cafes, restaurants and golf courses. Suites have a private spa pool or double spa bath for you to unwind and relax.



## Day 4



### SUGGESTED ACTIVITY - Wai-O-Tapu Thermal Wonderland

Wai-O-Tapu Thermal Wonderland is a spectacular showcase of New Zealand's colourful and unique geothermal elements sculpted by thousands of years of volcanic activity. You will be introduced to a diversely different natural landscape, extending over 18-sq. km. Enjoy viewing the volcanic features as you walk at your own pace along well-defined tracks. Relax in the first-class Visitor Centre, home to the Gift Shop and Café; facilities. Visit the Mud Pool, the largest in New Zealand, it was originally the site of a large mud volcano which was destroyed through erosion in the 1920s. See the history and beauty of the Lady Knox Geyser at 10:15 am every day where a daily eruption happens of up to 20 metres.

## Rotorua to Napier via Taupō

This drive will take you through the thermal region just south of Rotorua. Home to a plethora of unique geothermal attractions including boiling mud pits, natural hot springs and steaming geysers, this area is a must do before you move on to Napier. Notable attractions are Wai-O-Tapu, Waimangu and Craters of the Moon. Continue on to Taupō and marvel at the lake, a giant crater formed following a volcanic eruption in the year 180 CE. As you approach the town, be sure to stop at Huka Falls to view the spectacular sight of hundreds of cubic metres of water spilling every second down the narrow 11 metre drop. For an extra thrill take a jet-boat ride at the base of the falls. Leaving Taupō, follow the road as it climbs the rugged Ahimanawa Range before descending back down the Pacific Coast to art deco coastal township of Napier.

---

### Napier City

Napier, a coastal gem, is famed for its 1930s Art Deco architecture, the annual Art Deco Weekend, stately Norfolk pines, nearby wineries, and fresh local produce. With a Mediterranean climate and over 2,200 hours of sunshine annually, it boasts a thriving café culture set against stunning heritage buildings. The city center has around 30 cafés within walking distance, while Ahuriri, just beyond Bluff Hill, offers more upscale dining. Marine Parade overlooks the Pacific Ocean and Cape Kidnappers, home to the world's largest mainland gannet colony. Visitors can explore Ocean Spa, the Hawke's Bay Museum, and the National Aquarium of New Zealand. Bluff Hill, a key landmark, provides sweeping views of Napier, Perfume Point, Westshore Beach, and the busy Port of Napier, which exports timber, fruit, and meat worldwide.

In 1931, Napier was devastated by a 7.8-magnitude earthquake, New Zealand's worst natural disaster. Fires ravaged the city. Rebuilding efforts transformed Napier and Hastings into modern cities, while the uplifted Ahuriri Lagoon created much-needed land for expansion.

---

### Your accommodation: Bella Vista Napier

Bella Vista Motel Napier invites you to experience its friendly service and modern motel units. Located close to shops, restaurants and the renowned Marine Parade with its majestic Norfolk pines.



## Day 5



### Napier to Wellington City via Masterton

The rolling countryside of the Hawke's Bay leads you into some of New Zealand's richest farmland, located around the Manawatu region. Passing along the Manawatu Gorge the Wairarapa welcomes you. Masterton is home to the golden shears sheep shearing competition while just further south Greytown boasts the largest concentration of historic wooden buildings in the country.

Nearby Martinborough is home to dozens of boutique wineries. The route takes you over the Remutaka Range and along the magnificent natural harbour that the capital city of Wellington sits upon.

---

### Wellington

Wellington known in Māori as Te Whanganui-a-Tara is home to New Zealand's centre of government. Often referred to as 'mini Melbourne', this windy city is a melting pot of art, culture, food, and fashion. Quirky laneway bars, underground art shows, and hipster eateries make up its inner-city vibe, while a host of sandy beaches outside the urban bustle bring a cheerful holiday feel. Head to Te Papa Museum for a history lesson and a ticket to one of its many international exhibitions or jump aboard the Wellington Cable Car - the only running funicular railway in the country. For those with an eye for boutique, fashion wander through Cuba St to sample some of the city's best vintage stores. Break for coffee at a hipster cafe and be sure to snap a pic outside the 'Beehive', New Zealand's parliamentary debate chamber. Go behind the scenes at Weta Workshop Experience, the Oscar Award Winning design studio behind Lord Of The Rings, The Hobbit, and Avatar. If you're a foodie at heart, a two-hour round trip to Martinborough is a must-do. Take your time as you wind through spectacular wine country. For an educational day out, learn about New Zealand's native species at Zealandia, the world's first fully-fenced eco-sanctuary and home to over 40 types of endangered and native birds.

---

### Your accommodation: Adina CityLife Wellington

Adina CityLife Wellington is a suite style hotel with every amenity required for a comfortable stay, as well as being in a superb location to explore the compact city centre. Situated on Lambton Quay, you'll find the best shopping, tourist attractions and cultural landmarks all within easy walking distance.



## Day 6



### Return Rental Car to Wellington Ferry Terminal

Return your rental vehicle at the Wellington Ferry Terminal rental car depot and continue on the journey.

---

### Interislander Ferry Wellington to Picton

The 92 km journey between Wellington and Picton takes around 3 hours and has been described as 'one of the most beautiful ferry rides in the world'. Leaving Wellington Harbour the ferry passes many interesting points such as Pencarrow Head on top of which is New Zealand's oldest lighthouse (1859). Red Rocks is home to a seal colony and Oterangi Bay is the site which recorded the country's highest ever wind speed of 268 kph (167 mph).

From the Cook Strait spectacular views of the Kaikōura Ranges on the South Island can be enjoyed and dolphins and many sea birds are often seen. Around one hour of the cruise takes you through the Marlborough Sounds and this region of bush covered mountains, small islands, crystal clear waters and secluded bays offer remarkable photographic opportunities. The final leg of the cruise travels through Queen Charlotte Sound before coming to an end in the picturesque town of Picton.

---

### Collect Rental Car

This tour's from price includes an intermediate-sized vehicle, setting you up for comfortable travels. Yet, we understand every adventure is unique! Feel free to select the perfect wheels from our incredible collection of rental cars, spanning from economy hatchbacks to premium SUVs.

---

### Picton to Nelson via Queen Charlotte Drive

The Queen Charlotte Drive follows the Marlborough Sounds coastline between Picton and Havelock. Magnificent views of the Sounds can be had from many vantage points so allow plenty of time to enjoy the scenery. If you can spare the time take the narrow windy road to Portage along Mahau Sound and Kenepuru Sound with their bush clad hillsides and secluded sandy coves.

The small port town of Havelock has a great variety of cafes and restaurants to choose from so plan your journey to arrive in time for lunch. The drive also crosses the Pelorus River and just at this junction is the famous and historic Pelorus Bridge. From here there are a number of forest walks with the most popular being the Pelorus Bridge 30 minute Loop through Beech, Rimu and Totara forest to the swing-bridge.

Departing Pelorus Bridge following the windy roads with view looking over Cable Bay and the Bryant Range until you arrive onto Tasman Bay and the city of Nelson.

---

### Your accommodation: Tides Hotel (was Trailways Hotel)

Centrally located within a few minutes walk of Nelson's central shopping precinct, theatres, restaurants and cafés, the information centre, and close to the scenic waterfront. Located right on the river, many of the rooms open onto the river view. Also overlooking the river is The Tides Restaurant and Bar.



## Day 7



## Nelson to Hokitika

Leaving Nelson pass through the Nelson Lakes and Kahurangi National Park region. Trees, rivers and valleys accompany you now as you head towards the town of Murchison. Murchison is a quiet place and a great lunch stop, we can recommend a stop at Beechwoods Cafe. Heading South towards Westport you will drive along the Buller Gorge, enjoy some wonderful scenery as you follow this magnificent river. Crossing the river you get magnificent views of the gorge and once on the other side there are short bush walks, jet boat rides and some of the historic gold mining remnants. Heading south a worthwhile divert is to Cape Foulwind just south of Westport. Home to a seal colony and the short walk provides some spectacular scenery. Follow the coastal road to Punakaiki where you may want to visit Pancake rocks. These are awesome natural blow holes and rock formations, the name says it all.

The next township you'll pass is Greymouth, home to a great attraction here is Shantytown, a replica gold mining village and the TranzAlpine Scenic Train.

The township of Hokitika was built on the pioneering spirit of the West Coast settlers. A busy port in its heyday it then became a centre for the West Coast gold rush and more recently has become known for its Pounamu-Greenstone carving. Here you will find many shops selling intricately carved pieces as well as other fine arts and souvenirs.

The windswept beach is often covered with driftwood making for an interesting stroll and the scenery to the mountains is quite spectacular.

---

## SUGGESTED ACTIVITY - Māwhera Pounamu Pathway Immersive Experience

Māwhera Pā in Greymouth is the first location along the Pounamu Pathway touring route to open. This self-guided experience is a historical and creative exploration of the Poutini Ngāi Tahu and the Māwhera Pā settlement people, retold by their ancestors. The exhibition will lead you through six different narratives, each tale including a large-scale masterpiece, artistically crafted by Weta Workshop to cultivate an immersive journey of visuals and sound.

---

## Hokitika

The township of Hokitika was built on the pioneering spirit of the West Coast settlers. A busy port in its heyday it then became a centre for the West Coast gold rush and more recently has become known for its Jade or Greenstone crafts. Here you will find many shops selling intricately carved pieces as well as other fine arts and souvenirs. The town itself has several historic buildings as well as many fine dining restaurants and cafes.

The windswept beach is often covered with driftwood and the mountain scenery is quite spectacular with Mt Cook in view. Around 15 kilometres inland you will find Lake Kaniere, an idyllic spot to take bush walks or simply relax and take in the view. Just south of the town on State Highway 6 is Lake Mahinapua Scenic Reserve where you can enjoy some short walks. The Hokitika Gorge, around 45 minutes from the centre of is a magnificent granite gorge lined with beautiful native bush. A swing bridge just 2 minutes from the car park takes you over milky blue green pools and a short walk delivers you to large moss covered boulders to explore.

---

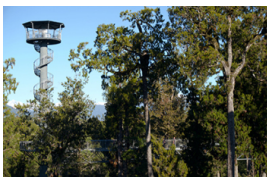
## Your accommodation: Beachfront Hotel Hokitika

The unique location of the Beachfront Hotel Hokitika on the shores of the Tasman Sea and in the heart of Hokitika allows you to beachcomb and shop local artisans' galleries right from your doorstep.



---

## Day 8



---

## Hokitika to Franz Josef

Leaving Hokitika pass through the old gold mining town of Ross where some of the original buildings and workings remain. Ross is also home to one of the few working mines left in New Zealand. Continuing South pass through Harihari, the township Guy Menzies crash-landed in after he became the first person to fly solo across the Tasman. The next established town is Whataroa, a small township, home to some of the world's rarest birds - White Heron known in Māori as the Kōtuku. From here it is a short drive to arrive into the glacier region, on a clear day you'll spot the Franz Josef Glacier ahead of the township.

---

## Franz Josef

Franz Josef, named after both the local village and the nearby glacier, holds special significance in Māori culture as "Ko Roimata o Hine Hukatere" – The Tears of the Ice Maiden. This rare glacier is one of only three in the world that descends from alpine heights into a temperate rainforest, almost reaching sea level. New Zealand is home to two of these unique glaciers, Franz Josef and Fox Glacier, both highly accessible and popular with visitors. The best ways to experience the glacier are through scenic flights or, for the adventurous, a heli-hike. You can also enjoy glacier views with a short drive from the village and walking tracks. Beyond the glacier, Franz Josef offers a wealth of adventure activities and beautiful forest and alpine walks, making it a must-visit destination.

## SUGGESTED ACTIVITY - Twin Glacier Scenic Helicopter Flight with The Helicopter Line

A spectacular scenic flight soaring over two of New Zealand's most famous glaciers, Fox and Franz Josef. Landing at the head of one and view the incredible sight of this frozen river as it winds its way through ancient carved valleys. It is important to read and understand the risks associated with this activity. A full risk disclosure can be found [here](#).

---

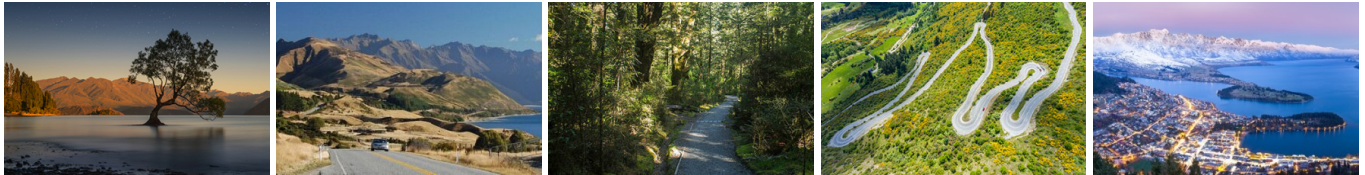
### Your accommodation: Punga Grove Motel & Suites

Punga Grove is right in the heart of Franz Josef Glacier village stylish accommodation in a beautiful rainforest setting.



---

## Day 9



### Franz Josef to Queenstown (via Wānaka)

Heading south you pass through the second glacier town of Fox Glacier before heading along the coast and into more classic West Coast bush scenery. We can recommend a stop at Knights Point Lookout elephant seals can often be seen basking on the sandy beaches at the far end of the point. Crossing the massive Haast River you turn inland and head into the valley climbing through mountains littered with waterfalls. The Haast Valley offers a spectacular view of the river and its enormous power. Along the way there is ample opportunity to admire Aspiring National Park and a stop at Roarig Billy Falls will leave you in awe. The Blue Pools near Makarora are a great 30-minute walk. The road from Makarora leads to Lakes Wānaka and Hāwea which will guide you into the stunning lakeside township of Wānaka before heading over New Zealand's highest sealed road, Crown Range Road and dropping into the Wakatipu basin, home to Queenstown. .

---

### Queenstown

Queenstown known in Māori as Tāhuna, is home to many adrenaline-inducing activities. Nestled on the shores of Lake Wakatipu, this alpine town has very distinct seasons, and most adrenaline-filled activities can be accessed year-round. Queenstown is home to jet boating, bungy jumping, rafting, skydiving, paragliding, and even indoor thrills. If you want that rush - head out on the Shotover Jet, dive off the Nevis Bungy, freefall on the Canyon Swing, or Zip line the Gondola. While arguably the brightest gem in New Zealand's crown, Queenstown offers far more than an action-packed getaway. If you're looking for a slightly slower pace, there are plenty of recreational activities, including hiking and biking trails to explore, guided tours, boat cruises, scenic flights, or spa and wellness options to help you get away. Head to the lakefront, eat at one of the al fresco eateries, and soak up the local vibes; catch a ride on the iconic 100-year-old steamship the TSS Earnslaw; or take the Skyline Gondola and enjoy bird's-eye views of the Remarkables mountain ranges and Lake Wakatipu. Pack a picnic and go for a hike, only 20 minutes from Central Queenstown, Coronet Peak opens for summer sightseeing. You can ride the Peak Gondola to the top for panoramic views and hike the trails, or go for a bike ride on many excellent biking trails. In winter, Queenstown becomes a world-class winter resort, with four ski areas and a range of activities, bars, restaurants, and ways to relax and unwind.&nbsp;

---

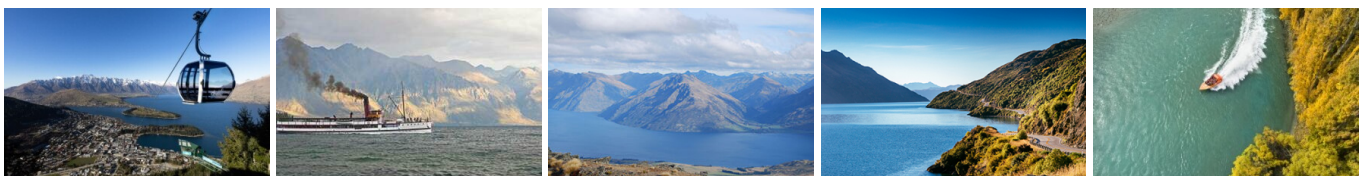
### Your accommodation: Blue Peaks Lodge

Blue Peaks Lodge offers well equipped self contained rooms with a fantastic location overlooking Queenstown and is just an easy five minutes walk to the Queenstown lakefront.



---

## Day 10



## Explore Queenstown

Well-known as New Zealand's 'adventure capital', Queenstown is home to a range of adventures, from the world's first and most famous bungy jumps to jet boat thrills, white-water rafting, and skydiving. However, Queenstown offers far more than a fast-paced, action-packed holiday. Settled on the shores of beautiful Lake Wakatipu beneath a soaring panorama of the Remarkables Mountain Range, this alpine town is surrounded by many historic, gastronomic, and scenic wonders. Take a stroll through the beautiful lakefront parks and gardens, browse through market stalls on weekends, dine in wonderful al-fresco restaurants, or ride on the 100-year-old historic Steamship - TSS Earnslaw to Walter Peak Station. Take the Queenstown Gondola up to Bob's Peak and soak up the panoramic views of the magnificent lake and mountain ranges. And after all of that, if you do want the adrenaline rush, Queenstown is known for taking your pick from the Shotover Jet, Canyon Swing, Zipline, Luge, or Heli-hike.

---

### SUGGESTED ACTIVITY - TSS Earnslaw Cruise and Walter Peak Gourmet BBQ Lunch

Enjoy a quintessential Kiwi experience a delicious barbeque lunch and a farm tour in a stunning lakeside setting. First, take a scenic cruise from Queenstown to Walter Peak High Country Farm on board the vintage steamship TSS Earnslaw, one of the last remaining fully functional coal-fired passenger ships in the southern hemisphere.

Disembark and take in the picturesque shores of the Station. Relax on the lakeside terrace at the Colonel's Homestead Restaurant and savour the aromas of the best local produce being cooked on the grill. The seasonal menu has plenty to choose from salads, vegetables and succulent meat with plenty of delicious dietaries on offer as well. Finish your meal with a scrumptious dessert before joining an entertaining farm demonstration or exploring the beautiful lakeside gardens.

---

### SUGGESTED ACTIVITY - Shotover Jet Canyon Jet Boat Ride

Shotover Jet is the only company permitted to operate in the Shotover River Canyons. It's a thrilling ride! Skim past rocky outcrops at close range in your Shotover Jet 'Big Red', as you twist and turn through the narrow canyons at breathtaking speeds. And a major highlight - hold tight for the world-famous Shotover Jet full 360-degree spins! It is important you read and understand the risks associated with this activity. For more information please see here.

---

### SUGGESTED ACTIVITY - Queenstown Skyline Gondola Ride

Hop aboard the Skyline Gondola - the steepest cable car lift in the Southern Hemisphere! From which you can take in the awe-inspiring views of this spectacular landscape. Sit back and relax as you enjoy panoramic views of The Remarkables, Walter Peak, Cecil Peak, Coronet Peak and the magnificent Lake Wakatipu.

---

### Your accommodation: Blue Peaks Lodge

Blue Peaks Lodge offers well equipped self contained rooms with a fantastic location overlooking Queenstown and is just an easy five minutes walk to the Queenstown lakefront.



---

## Day 11



### Queenstown to Te Anau

Passing through the bustling suburb of Frankton, follow the shores of Lake Wakatipu. The Remarkables mountain range towers over you on the stretch of road known as "The Devil's Staircase" leading you to the township of Kingston. You'll venture into Southland before crossing the rolling tussock lands of Mossburn (deer capital of New Zealand) and shortly arriving at Te Anau, the gateway to Fiordland National Park.

---

### Te Anau

It is the gateway to Fiordland National Park and a perfect base to visit Piopiotahi-Milford Sound. The Milford Road originates here, and this is arguably one of the most scenic stretches of highway in the country. Te Anau sits on the shores of spectacular Lake Te Anau, which reaches depths of 417 meters. Te Anau Township is the starting point for many walking tracks, including two of New Zealand's Great Walks, the Milford track and the Kepler track. Apart from hiking, you could go kayaking, lake cruising, fishing, or exploring Te Anau Glowworm Caves. You could go for a bike ride alongside the lake towards Lake Manapouri, on a popular Lake to Lake biking route. Along the way, you will pass a bird sanctuary specialising in Takahe, and other native birds.&nbsp;

---

### Your accommodation: Lakefront Lodge

Stylish self-contained motel units less than a minute walk from Te Anau Lakefront. Enjoy a close walk to shops, cafes and restaurants.



---

## Day 12



### Te Anau to Dunedin

The drive from Te Anau to Dunedin takes you through classic Southland farmland scenery to Gore, the official home of country music in New Zealand. Continuing onward to the East Coast you'll pass through small farming communities and then on to State Highway 1. Balclutha is the next landmark town and gateway to the seaside community of The Catlins. From here it is a short drive through to Dunedin, known in Māori as Ōtepoti and known worldwide as "Edinburgh of the South".

---

### Dunedin

Dunedin, known in Māori as Ōtepoti, is referred to as the "Edinburgh of the Southern Hemisphere". The city has a rightly deserved reputation as one of the best-preserved Victorian and Edwardian cities in the Southern Hemisphere. Of particular note is Dunedin Railway Station, built 1904 - 1906, and St Paul's Cathedral in the Octagon. The Otago Museum is renowned for its Māori and Pacific Island collections and natural history displays. A visit to the Speights, New Zealand's oldest brewery, is also considered a must while in Dunedin. The Botanic Gardens is a great spot and at the right time of year, you can witness the Rhododendron Dell in bloom. The Otago Peninsula is the only home in the world to the Northern Royal Albatross. The Peninsula can be visited for the day from Dunedin and the stunning harbor landscape and wildlife are worth exploring. High among the rolling hills of the Peninsula is Larnach Castle, the grand home of an early politician. Construction of the castle began in 1871 and was completed 12 years later. From here, views out to sea and back towards the city emphasize the singular beauty of Dunedin and its jewel-like harbor.

---

### SUGGESTED ACTIVITY - Dusky Sound and Doubtful Sound Sea Plane Flight with Wings & Water Te Anau

Fiordland is described in Māori Legend as Ata Whenua - The Shadowland. Soar above and absorb the sheer size and landscape of this ancient land to see why. Combine the famous Doubtful Sound with the untouched beauty of Dusky Sound, you can expect an exhilarating flight of endless peaks, glacial calved landscape, waterfalls, and over 350 islands scattered throughout the coastal region.

---

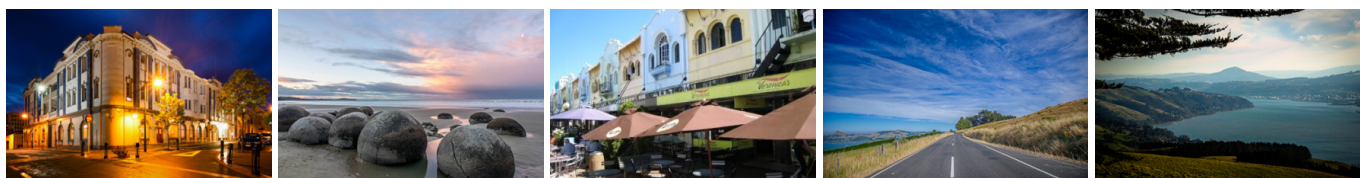
### Your accommodation: Motel on York

Motel on York is located in the heart of Dunedin city. The property offers superior accommodation only 300 metres away from cafes and restaurants.



---

## Day 13



## Dunedin to Christchurch

Heading north from Dunedin your first stop should be Moeraki to explore the famous and unique Moeraki Boulders strewn on the beach. The town of Oamaru is most famous for its buildings constructed with the unique locally quarried white stone. Explore the old quarter or if you don't mind a late arrival into Christchurch then stay longer to see the blue penguins come ashore at dusk. The port town of Timaru is next and then the vast Canterbury Plains. Crossing New Zealand's longest bridge at Rakaia you can view some great examples of the South Island's famous braided rivers. Arriving in Christchurch City puts you close to the airport and the International Antarctic Centre, a visit is highly recommended. Here you can get as close to experiencing life on the frozen continent without actually visiting plus see New Zealand's little blue penguins and ride in a Haaglund Tracked vehicle.

---

## Christchurch

Christchurch known in Māori as Ōtautahi, is the largest metro area in the South Island. Commonly referred to as New Zealand's "Garden City", Christchurch is home to one of the biggest public parks in the country, and beautiful botanic gardens. The city was hit with devastating earthquakes in 2010 and 2011, now the city crosses the line between its English heritage and a new modern architecture. To take in some arts and culture, pay a visit to the Canterbury Museum or the Christchurch Art Gallery. Take a step back in time with a tram around the city or punt along the Avon River. If tasting your way around the city is your means of travel, try out a cultural eating tour. A short drive from the CBD will lead you to the outskirts of the Banks Peninsula beachside suburb of Sumner or through the tunnel to Lyttleton Harbour which hosts fantastic markets on Saturday mornings.

---

## Your accommodation: Quest on Cambridge

Quest on Cambridge serviced apartment-style hotel rooms offer guests a relaxed and comfortable Christchurch accommodation experience. Each room has an open-plan living area, a fully equipped kitchen, and natural light. Quest on Cambridge is a short walk from the south shopping centre and to the Botanic Gardens.



---

## Day 14



## Return Your Vehicle to Christchurch Airport

It's time to return your rental car and let the South Island journey come to an end. If time allows spend the day exploring more of Christchurch, we'd suggest a leisurely drive up the Port Hills for some great sites and then over to the harbour of Lyttleton, before circling through the tunnel and back to the airport to continue your journey home.

---

## Farewell from Aotearoa / New Zealand

Bid farewell to Aotearoa / New Zealand, taking with you unforgettable memories of its breathtaking landscapes and incredible adventures. In Māori, it is said mā te wā, which is not goodbye, it is see you soon!

---

---

## Tour details

Departures:	Daily
Tour type:	Nationwide Self Drive
Starts:	Auckland
Finishes:	Christchurch
Tour length:	14
Accommodation:	Motels
Car/transport type:	

---

## Accommodation summary

Day 1	Oaks Auckland Hotel
Day 2	Beachside Resort
Day 3	Silver Fern Suites & Spa
Day 4	Bella Vista Napier
Day 5	Adina CityLife Wellington
Day 6	Tides Hotel (was Trailways Hotel)
Day 7	Beachfront Hotel Hokitika
Day 8	Punga Grove Motel & Suites
Day 9	Blue Peaks Lodge
Day 10	Blue Peaks Lodge
Day 11	Lakefront Lodge
Day 12	Motel on York
Day 13	Quest on Cambridge