

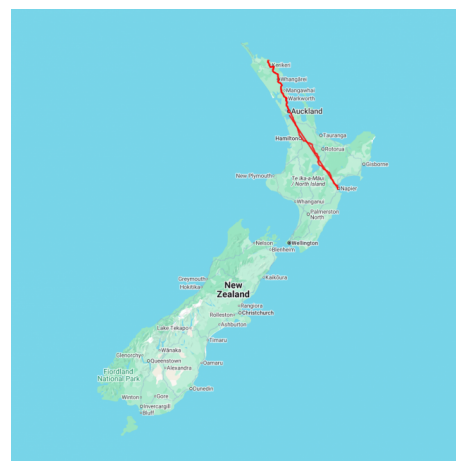


North Island Fairways

Experience the pinnacle of New Zealand golf on a journey through the North Island's most dramatic landscapes. From the volcanic heart of Taupō to the rugged cliffs of Hawke's Bay, you'll tackle world-class fairways at Te Arai, Kinloch, and Cape Kidnappers. This is a perfectly balanced getaway combining prestigious play with a standout luxury lodge stay.

Starts in: Auckland
Finishes in: Auckland
Length: 10days / 9nights
Accommodation:
Can be customised: Yes

This itinerary can be customised to suit you perfectly. We can add more days, remove days, change accommodations, mix it up, add activities to suit your interests or simply design and create something from scratch. Call us today to get your custom New Zealand itinerary underway.



Inclusions:

Includes: Late model rental cars

Includes: Unlimited kms

Included activity: The Visitor Promise - Cultural Learning Course

Included activity: Air New Zealand flight Napier to Auckland

Included activity: Rosewood Kauri Cliffs Golf Course

Included activity: Hamilton Gardens - Entry with Audio Guide

Included activity: Craters of the Moon Geothermal Walk

Included activity: Rosewood Cape Kidnappers Golf Course

Includes: Fully inclusive rental car insurance (excess may apply)

Includes: Afterhours emergency support while touring

Included activity: Electronic Travel Guide and In-Country Support App

Included activity: Waitangi Treaty Grounds Guided Tour and Cultural Performance

Included activity: Island Hopper Day Cruise with Barefoot Sailing Adventures - Lunch Included

Included activity: Wairakei Golf Club

Included activity: Hawkes Bay Twilight Odyssey Tour with Odyssey NZ - Dinner Included

: 9 breakfasts, 1 lunch, 2 dinners

Day 1



Welcome to Auckland

Welcome to Auckland, known in Māori as Tāmaki Makaurau. Auckland is New Zealand's vibrant "City of Sails," and the country's largest metropolitan area. Nestled between the Pacific Ocean and the Tasman Sea. Surrounded by native bush, lush rainforests, and pristine beaches, Auckland is a haven for both adventurers and urban explorers. Wander through world-class museums and galleries in the city centre or enjoy a peaceful retreat at the Auckland Gardens, where stunning landscapes showcase New Zealand's diverse flora. Stroll along the lively waterfront to savour fresh seafood and international cuisine at Viaduct restaurants. For an unforgettable perspective, ascend the iconic SkyTower, New Zealand's tallest structure, and take in panoramic views of the city and its picturesque islands.

Collect Rental Car

This tour's from price includes an intermediate-sized vehicle, setting you up for comfortable travels. Yet, we understand every adventure is unique! Feel free to select the perfect wheels from our incredible collection of rental cars, spanning from economy hatchbacks to premium SUVs.

Your accommodation: Hotel Fitzroy Curated by Fable

Immerse yourself in a relaxed stay in this carefully restored landmark villa where indulgent treats like cocktails and hors d'oeuvres in the library, breakfast in bed and quiet relaxation are all part of the experience. Beautifully designed superior and luxury rooms cater to your every whim, while our discreet hosts can curate your perfect Ponsonby experience.



Day 2



Auckland to Paihia

The drive from Auckland to the Bay of Islands takes approximately 3.5 hours, but allow extra time to enjoy the sights along the way. Pause for a breath of fresh salty air in Whangarei, where you can explore scenic highlights like the Whangarei Falls or the lively Town Basin. Further along, take a break in Kawakawa known for its quirky, world-famous Hundertwasser Toilets. As you approach Paihia, the gateway to the Bay of Islands, soak in the stunning views of native bush and endless golden beaches that define this iconic Northland region.

Paihia, Bay of Islands

Paihia, an oceanside gem, played a pivotal role in Aotearoa-New Zealand's history. A visit to the Waitangi Treaty Grounds offers a profound look into the signing of the Waitangi Treaty, where 43 Māori chiefs and 39 Crown representatives shaped the nation's future. Beyond its rich history, Paihia is a haven for water-based activities. From sailing through the Hole in the Rock and dolphin spotting to kayaking or fishing, or perhaps a day relaxing on the beach, this picturesque coastal town is the perfect base to explore the stunning Bay of Islands.

Waitangi Treaty Grounds Guided Tour and Cultural Performance

Waitangi is one of New Zealand's most historic sites where the Treaty of Waitangi was signed in 1840 between the Māori and the British Government. This two day pass allows you access to the Treaty of Waitangi Grounds and includes admission to the Te Kōngahu Museum and Te Rau Aroha Museum and a Maori Cultural performance. During your guided tour, learn about the history of the treaty and discover the stories and events that shaped New Zealand. The cultural performance inside the carved meeting house includes waiata (singing), poi and the haka - a war dance Aotearoa-New Zealand is well known for.

SUGGESTED ACTIVITY - R. Tucker Thompson Sundowner Sailing with Fullers GreatSights

A perfect way to end the day. Experience the Bay of Islands the old-fashioned way with a cruise on the R. Tucker Thompson, a traditional gaff-rigged schooner with her own unique history. On the Sundowner Sailing, take in the views as the ship sails across the sheltered waters of the inner harbour. Enjoy an antipasto platter as the sun starts to set.

About the R. Tucker Thompson - Built from 1970-1985, the R. Tucker Thompson's design is based on the halibut schooners of the North West American coast. With a lofty rig of varnished oregon spars, Kwila decks and bulwarks and brasswork features, she looks the part of a 19th century working ship: purposeful and square-shouldered, but fast enough to out-run the law!

Your accommodation: Copthorne Hotel and Resort Bay of Islands

Copthorne Hotel & Resort Bay of Islands is located within the Waitangi Treaty grounds, surrounded by native bush and the beautiful Bay of Islands Harbour.

Meals included: Breakfast



Day 3



Paihia, Bay of Islands to Matauri Bay

Leaving the Bay of Islands you first pass the turn off to Kerikeri, which was one of the first settled areas of New Zealand. The Stone Store and Kemp House, two of New Zealand's oldest buildings still stand and are open to visitors. Kerikeri is the fruit basket of the north and also home to crafts people and producers of artisan food produce, so the farmers market and craft markets are great places to explore. There are also numerous green spaces and forests to wander through, including two 'Gardens of National Significance': Palmco and Wharepuke Gardens which are open daily and fabulous examples of sub-tropical gardens. Continuing north it's just a short drive to Matauri Bay home to wonderful beaches and bays.

Rosewood Kauri Cliffs Golf Course

Rosewood Kauri Cliffs was designed and built by David Harman. The par 72 championship golf course measures 7,119 yards / 6,510 metres and offers five sets of tees to challenge every skill level. Fifteen holes view the Pacific Ocean, six of which are played alongside cliffs which plunge to the sea. The beautiful inland holes wind through marsh, forest and farmland. Rosewood Kauri Cliffs is currently ranked #39 in the world by Golf Digest Top 100 Greatest Golf Courses in the World.

Rosewood Kauri Cliffs recently underwent a renovation from world-renowned golf course architect Rees Jones. The 5th hole received a complete redesign and was transformed from a long, uphill, forced carry par-3 to a short "drop shot" par-3. Other notable changes were the addition of tees on the 2nd and 9th holes and a bunker renovation on the 4th hole. The golf complex includes a world-class practice range, putting and chipping greens, a well-stocked golf shop, and ladies' and men's locker rooms. Premium ladies' and men's rental clubs are available.

Matauri Bay to Paihia, Bay of Islands

Today return south through Kerikeri known for its crafts studios, fruit orchards and artisan products. Home to two of the oldest buildings in the country Mission House and the Stone Store (both of which encompass materials and artifacts from early european settlers) Kerikeri is a delightful place to learn about New Zealand's early history. Continue on to Paihia, your destination for the night and great a base from which to explore the Bay of Islands.

Your accommodation: Copthorne Hotel and Resort Bay of Islands

Copthorne Hotel & Resort Bay of Islands is located within the Waitangi Treaty grounds, surrounded by native bush and the beautiful Bay of Islands Harbour.

Meals included: Breakfast



Day 4



Explore Bay of Islands

Commonly known as the 'winterless north' New Zealand's Bay of Islands is made up of over 140 subtropical atolls. Renowned for its untouched beaches, abundant marine life, and idyllic climate, this tropical paradise ticks all the boxes. Spend some time on a remote stretch of beach, or see the dolphins on an ocean safari. If diving is your thing, take the morning to descend the Rainbow Warrior - The Greenpeace flagship sunk by French saboteurs in 1985. Wander around Russell, a whaling port founded in 1843. Learn about our culture in historic Waitangi, the site where The Treaty of Waitangi was signed in 1840 between the Māori and Europeans. Alternatively, you may like to take a day tour to Cape Reinga, the very top of the North Island.

Island Hopper Day Cruise with Barefoot Sailing Adventures - Lunch Included

Come spend a day with the Barefoot Sailing crew for a magical day cruise sailing to a beautiful wildlife sanctuary island. You can enjoy water activities such as snorkeling and paddle boarding and explore hiking trails which are perfect for bird lovers. This small-group tour is designed to suit the active adventurer but is equally relaxing if you're looking for an easy-going day out. Please take your time to understand the risks associated with this activity here.

Your accommodation: Copthorne Hotel and Resort Bay of Islands

Copthorne Hotel & Resort Bay of Islands is located within the Waitangi Treaty grounds, surrounded by native bush and the beautiful Bay of Islands Harbour.

Meals included: Breakfast, Lunch



Day 5



Paihia, Bay of Islands to Warkworth

Journey south from the coastal beauty of Paihia to the charming town of Warkworth, located in the heart of the Matakana wine region. This drive showcases a mix of Northland's lush countryside, tranquil beaches, and charming small towns. From Paihia, follow State Highway 11 toward Kawakawa, where you can make a quick stop to see the quirky Hundertwasser Toilets, a work of art in themselves. Continue south, merging onto State Highway 1, which will guide you through rolling farmland and dense native bush. Consider a detour to Whangārei, the largest city in Northland, where you can stretch your legs with a walk to the stunning Whangārei Falls or grab a coffee in the vibrant Town Basin. Back on the highway, the road meanders past small towns like Ruakākā and Waipū, with optional side trips to pristine beaches. As you approach Warkworth, you'll notice the landscape transitioning into vineyards and orchards, a signature of the Matakana region. Warkworth's relaxed charm, with its boutique shops, cafés, and the nearby Matakana Coast, makes it a great place to end this leg of your journey.

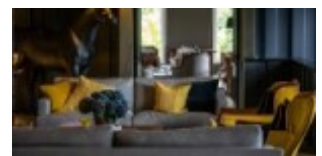
Explore Matakana

Discover the glorious Matakana Coast, a region where rolling vineyards meet rugged coastlines and world-class art. Matakana offers a sophisticated escape into New Zealand's artisan heart. Wander through whimsical sculpture gardens at Sculptureum or Bricks Bay Wines & Sculpture Trail, sample award-winning local wines, or explore the pristine white sands of Tāwharanui Regional Park. You can stretch your legs along the riverside, grab a world-class coffee from local roasters, or browse boutique galleries. It's a place where the pace slows down, and the quality of life, and the food, is second to none.

Your accommodation: Woodhouse Mountain Lodge Warkworth

Contemporary secluded villa accommodations in paradise-like grounds are set high above surrounding land, meaning privacy is guaranteed and views extend as far as the Hauraki Gulf. Facilities include a restaurant, outdoor pool, sauna, day spa treatments, cocktail bar, and extensive grounds to explore.

Meals included: Breakfast, Dinner



Day 6



Warkworth to Taupo

Head south through Auckland on State Highway 1. When you reach the Bombay Hills this marks the outer boundary of Auckland and welcomes you to the Waikato region. Pass through Hamilton and continue to Tirau, where you can stop to photograph the iconic corrugated iron sculptures. From there, continue on State Highway 1 to the lakeside town of Taupo.

Hamilton Gardens - Entry with Audio Guide

Experience the world's most award-winning gardens with a self-guided audio tour that brings 4,000 years of history to life. From the intricate designs of the Italian Renaissance to the mystical allure of Ancient Egypt, this immersive journey reveals the hidden secrets and cultural significance of eighteen unique garden rooms. It is an unmissable, world-class encounter with nature and storytelling, allowing you to explore these internationally acclaimed landscapes at your own pace.

The Blue Spring, Te Waihou Walkway - suggested activity

Discover one of the most mesmerizing natural wonders in the North Island. The Blue Spring at Te Waihou Walkway is internationally acclaimed for its crystal-clear, turquoise water, which is so pure it supplies approximately 60% of New Zealand's bottled water. As you meander along the riverside track, you'll be captivated by the vibrant underwater vegetation swaying in the gentle current, creating a living "sunken garden" effect. This is a tranquil, must-see escape for photographers and nature lovers alike.

Explore Taupo

Nestled on the shores of New Zealand's largest lake, Taupō is a vibrant town surrounded by stunning volcanic landscapes and the peaks of Tongariro National Park, including Mt Ruapehu. The town buzzes with cafes, shops, and bars, while outdoor enthusiasts can choose from bungy jumping, skydiving, fishing, kayaking, sailing, horse riding, or hiking. Don't miss the quirky 'Arte Cafe and Gallery with its mosaic outdoor living room and iconic 'Alice's Chair'. Just outside town, explore the geothermal wonders of Craters of the Moon, the power of Huka Falls, or take a jet boat ride for an unforgettable view. Taupō perfectly blends natural beauty, thrilling adventures, and unique cultural experiences.

SUGGESTED ACTIVITY - Wairakei Terraces Walkway and Thermal Pools

Journey into the mysterious world of the Wairakei Terraces, described by early explorers as a natural phenomenon unlikely to be found anywhere else. You'll wander past the Terraces along the geothermal and Maori cultural walkway where you will discover intricate carvings that depict the history of New Zealand Maori and in particular the local tribe Ngati Tuwharetoa. Observe the geyser as it expels boiling water heated at the Earth's core, this silica rich water flows away into the startling blue pools and cascades over the terraces contributing to their spectacular form. After your walk you'll have time to relax in the therapeutic waters of the Wairakei Thermal Pools and soak up the unique atmosphere.

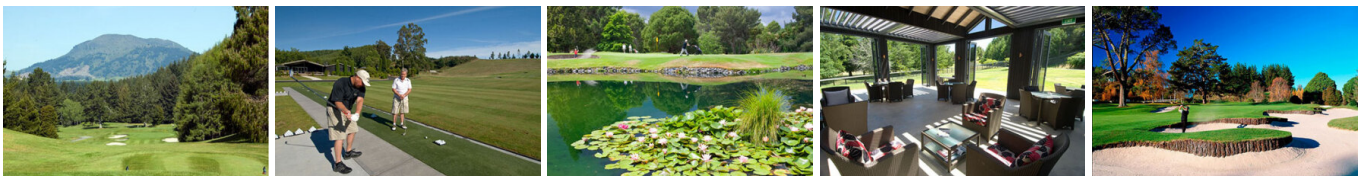
Your accommodation: Millennium Hotel & Resort Manuels Taupo

Millennium Hotel & Resort Manuels Taupo enjoys a magnificent location right on the shores of Lake Taupo, New Zealand's largest lake.

Meals included: Breakfast



Day 7



Wairakei Golf Club

Wairakei International Golf Course in 2005 was rated by the Prestigious US Golf Digest magazine to be in the top 100 courses in the world outside of the USA. Located in the heart of the North Island and set amongst the spectacular scenery of the Lake Taupo region. Designed by Commander John Harris, Michael Wolveridge and Peter Thomson with the aim of producing New Zealand's first internationally recognised golf course, there is little doubt in any New Zealanders mind that this trio exceeded all expectations. The end result is a course that sprawls over 450 acres of natural countryside. This coupled with the 6444 metres from the championship tees and 108 large well placed bunkers has led to worldwide acclaim.

Click here for current green fees and course details.

Your accommodation: Millennium Hotel & Resort Manuels Taupo

Millennium Hotel & Resort Manuels Taupo enjoys a magnificent location right on the shores of Lake Taupo, New Zealand's largest lake.

Meals included: Breakfast



Day 8



Taupō to Napier

The road from Taupō climbs the Ahimanawa Range before reaching the Pacific Coast north of Napier, a city famed for its 1930s Art Deco architecture, Mediterranean climate, and over 2,200 hours of sunshine a year. Known as the city by the sea, Napier boasts vibrant cafes, wineries, and local produce, with Marine Parade offering sweeping ocean views toward Cape Kidnappers, home to the world's largest mainland gannet colony. Bluff Hill provides panoramic views of the town, Westshore beaches, and the bustling Port of Napier. A full day can be spent exploring Ocean Spa hot pools, the Hawke's Bay Museum, and the National Aquarium. In 1931, a devastating magnitude 7.8 earthquake destroyed much of Napier and Hastings, killing 258 people. The subsequent rebuilding created the modern Art Deco city we see today, with the Ahuriri Lagoon raised over two metres to allow for future growth.

Craters of the Moon Geothermal Walk

Located a few minutes north of Taupō this geothermal park known as Craters of the Moon has a great self guided 30 minute walk through steaming craters and bubbling mud pools. Well marked walkways with interpretive boards guide you through one of the regions many active volcanic parks.

Hawkes Bay Twilight Odyssey Tour with Odyssey NZ - Dinner Included

Savour a progressive culinary journey through Hawke's Bay's vineyards. Start with a boutique wine tasting, absorb the awe-inspiring views from Te Mata Peak, indulge in a gourmet main at a top winery restaurant, and finish with a luxurious dessert at Mission Estate. Fine food, exceptional wine, and stunning scenery await!

Your accommodation: Craggy Range

Craggy Range is nestled amongst the vines at Giants Winery, with views of Te Mata Peak and the Tukituki River valley. The accommodations offer two luxurious bedrooms, both with en-suite bathrooms and a well-appointed kitchen and living area.

Meals included: Breakfast, Dinner



Day 9



Rosewood Cape Kidnappers Golf Course

Designed by legendary golf architect Tom Doak, the Rosewood Cape Kidnappers par 71 golf course measures 7,119 yards (6,510 meters) and will challenge golfers of all skill levels. Completed in 2004, our spectacular New Zealand golf course has been hailed as one of the great modern marvels in golf. Built on a ridge-and-valley landscape and with stunning sea views, Rosewood Cape Kidnappers Golf Course plays high above the ocean atop dramatic cliffs.

With cliff-edge fairways perched 140 metres above sea level and with a surface that remains firm and fast, this course offers holes unlike anything you find elsewhere in the world. While every hole has a spectacular view of the Bay, some play cautiously alongside deep ravines as others intimidate golfers with deep cliff top bunkers and sheer drops off the very edge of the earth. The golf complex includes a world-class practice range, putting and chipping greens, a well-stocked golf shop, clubhouse and ladies' and mens' locker rooms. Premium ladies' and mens' rental clubs are available.

Your accommodation: Craggy Range

Craggy Range is nestled amongst the vines at Giants Winery, with views of Te Mata Peak and the Tukituki River valley. The accommodations offer two luxurious bedrooms, both with en-suite bathrooms and a well-appointed kitchen and living area.

Meals included: Breakfast



Day 10



Return your rental car

Return your rental vehicle to your designated depot before your next adventure.

Air New Zealand flight Napier to Auckland

Farewell from Auckland

Farewell Auckland today. If there is more of New Zealand you would like to explore, talk to your sales consultant about planning your next stop!

Tour details

Departures: Daily
Tour type: North Island Self Drive
Starts: Auckland
Finishes: Auckland
Tour length: 10
Accommodation:
Car/transport type:

Accommodation summary

Day 1	Hotel Fitzroy Curated by Fable
Day 2	Copthorne Hotel and Resort Bay of Islands
Day 3	Copthorne Hotel and Resort Bay of Islands
Day 4	Copthorne Hotel and Resort Bay of Islands
Day 5	Woodhouse Mountain Lodge Warkworth
Day 6	Millennium Hotel & Resort Manuels Taupo
Day 7	Millennium Hotel & Resort Manuels Taupo
Day 8	Craggy Range
Day 9	Craggy Range